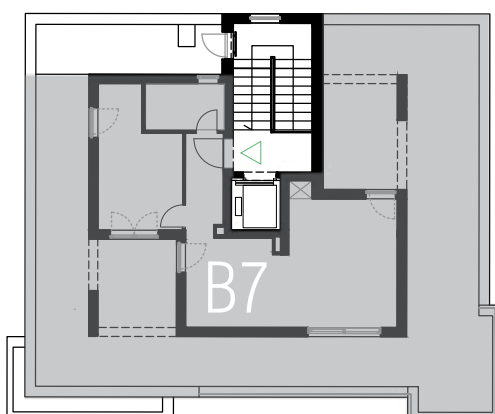
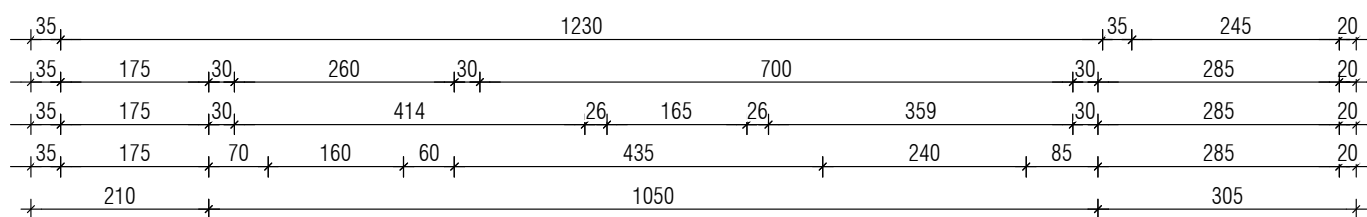
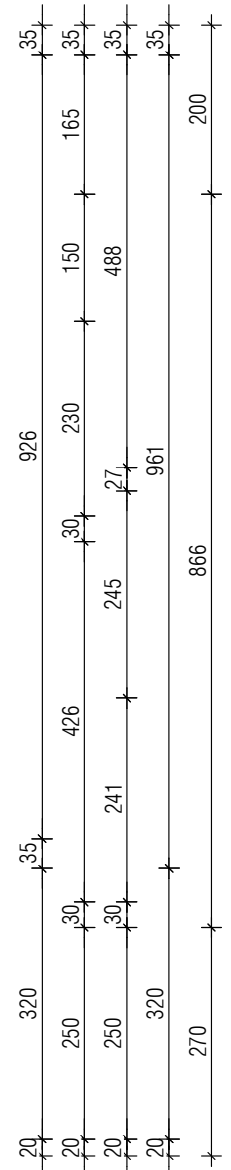
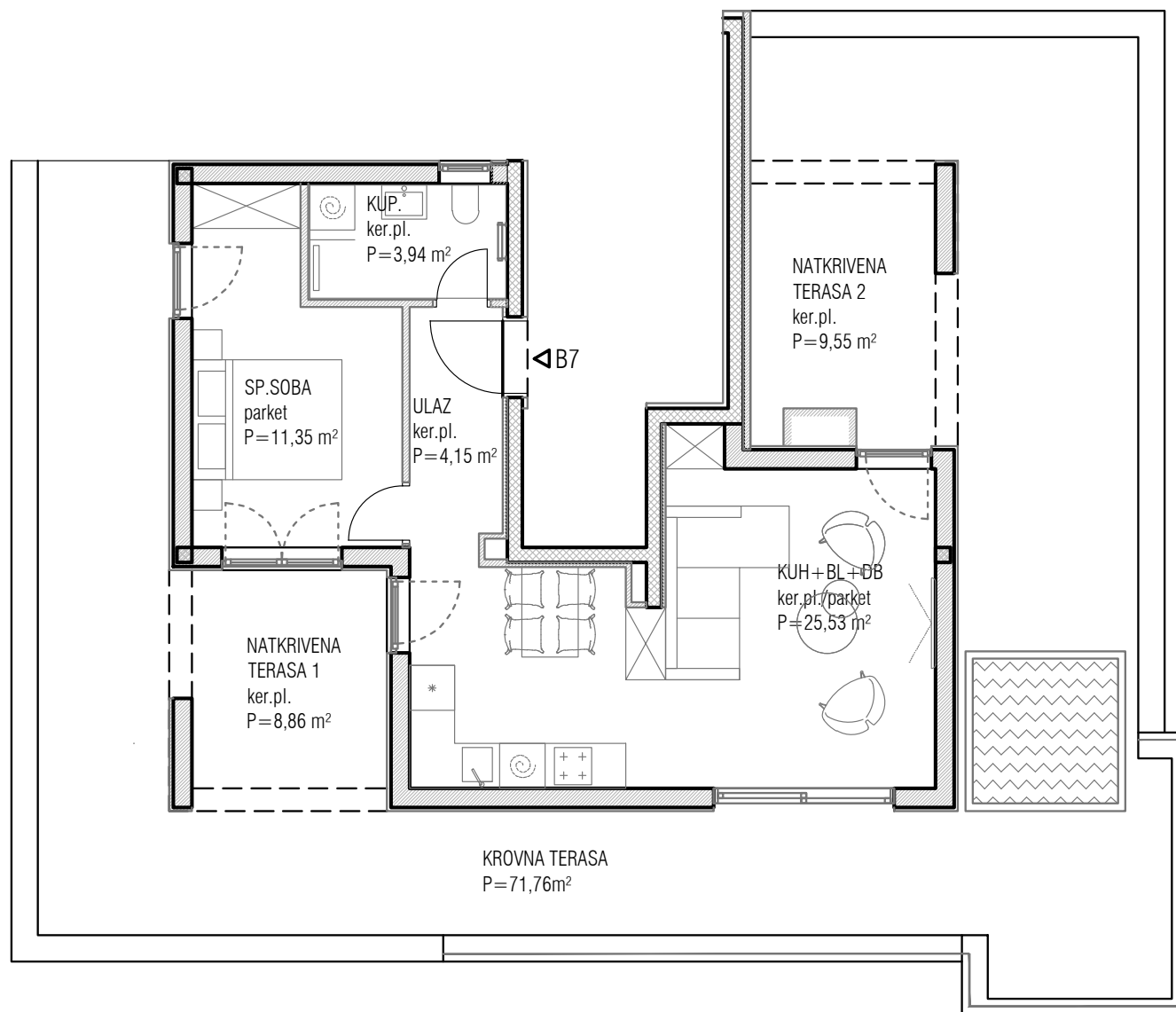
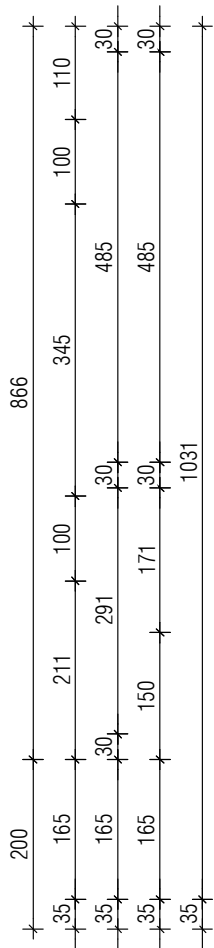
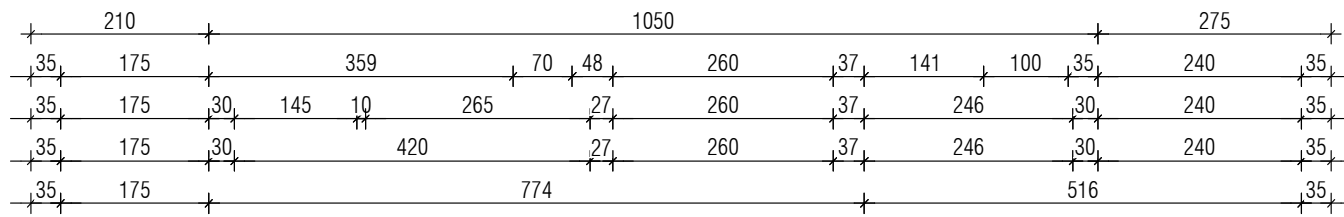


# ZGRADA B | STAN B7



TLOCRT NADGRAĐA

## STAN B7 (1S)

Prostorija	Bruto	Koef..	Neto
ULAZNI PROSTOR	4,15 m <sup>2</sup>	1	4,15 m <sup>2</sup>
KUHINJA + BLAG. + DNEVNI B.	25,53 m <sup>2</sup>	1	25,53 m <sup>2</sup>
SPAVAĆA SOBA 1	11,35 m <sup>2</sup>	1	11,35 m <sup>2</sup>
KUPAONICA	3,94 m <sup>2</sup>	1	3,94 m <sup>2</sup>
<b>Ukupna zatvorena površina</b>	<b>44,97 m<sup>2</sup></b>		<b>44,97 m<sup>2</sup></b>
NATKRIVENA TERASA 1	8,86 m <sup>2</sup>	0,75	6,65 m <sup>2</sup>
NATKRIVENA TERASA 2	9,55 m <sup>2</sup>	0,75	7,16 m <sup>2</sup>
KROVNA TERASA	71,76 m <sup>2</sup>	0,25	17,94 m <sup>2</sup>
<b>Sveukupna površina</b>	<b>135,14 m<sup>2</sup></b>		<b>76,72 m<sup>2</sup></b>